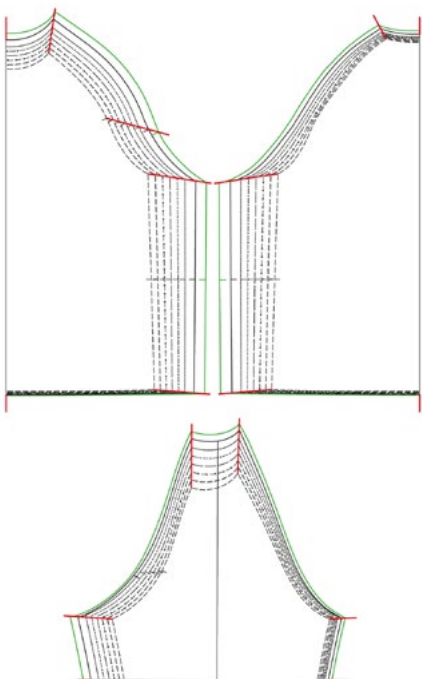
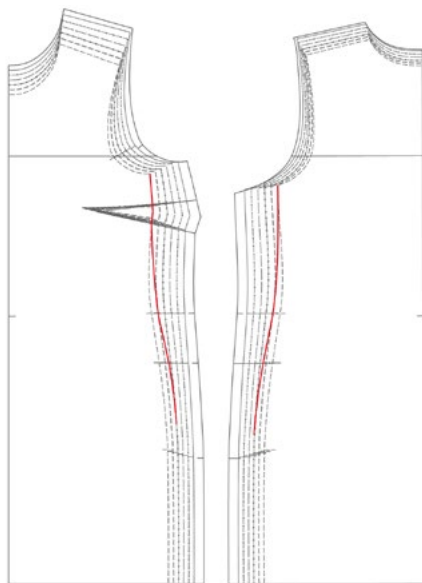


How do I
adjust a cut??



WHAT SIZE FOR WHICH MODEL?

For tops the size is selected according to the bust size, for trousers and skirts according to the hip size. If the measurements are somewhere in the borderline area, you have the choice whether the garment should be looser or tighter fitting.

For dresses, the cut is also selected according to the bust, but then a smooth blending is drawn between the size lines of the cut, as shown in the drawing (red line). Our example shows a bust size of size 36 and a hip size of size 40.

FOR BODY HEIGHT 168 CM	36	38	40	42	44	46	48
Bust	84	88	92	96	100	104	110
Waist	67	71	75	79	83	87	92
Hip	93	96	99	102	105	108	114
Front length	43	44	45	46	47	48	49
Rear waist length	41	41,5	42	42	42	42	43
Back width	34,5	35,5	36,5	37,5	38,5	39,5	41
Shoulder width	12	12	12	12,5	12,5	12,5	13
Arm length	60	60	60	60,5	60,5	61	61
Upper arm circumference	27	28	29	30,5	31,5	32	34
Side length	106	106	106	106	106	106	106

CUT ADJUSTMENTS

ONE SIZE UP?

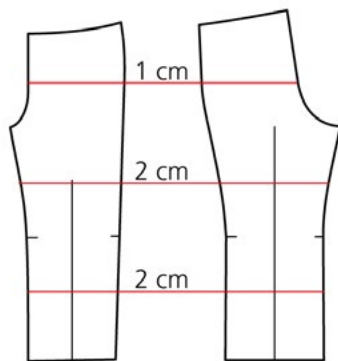
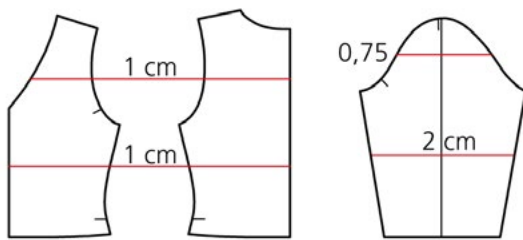
The straighter and easier a model is cut, the easier it is to make one size larger from it. In general, sizes in the range between 36 and 46 change linearly, above and below that unfortunately not so easily. You have to approach this area carefully.

After the new size has been drawn in, the seam lengths must be checked and adjusted, and the alignment marks may have to be offset. But be careful, a normal top shaping is always longer than the corresponding armhole, except for raglan sleeves, as in the drawing.

To scale up or down, the difference to the next size is measured at all corners marked in red and a point is placed at the appropriate distance on the red line. Then draw all lines in the same sequence.



made to create **BERNINA**



I AM SHORTER/TALLER

As already mentioned, the size table refers to a height of 168 cm. Short sizes assume a height of 160 cm, tall sizes 176 cm.

To adjust a cut to these sizes, the paper cut pieces are cut apart along the drawn lines and lengths are inserted or removed up to the specified difference. Resulting steps are adjusted smoothly at the sides.

THE FINAL CUT PIECE

Once all the facts have been considered and the cut has been adjusted accordingly, the individual paper-cut pieces are held in front of the mirror again or even better put on the personal tailor's dummy. In this way, the very last changes before cutting can be included.

Admittedly, this all sounds quite elaborate. But once you get the hang of it, it's easy to adapt a cut to your own needs. And you learn from experience, the more of it you have, the better - so let's get down to business!

By the way: All our cuts and measurements are without seam allowance, unless otherwise indicated!

PLEASE READ HERE ALSO

- How do I take the measurements correctly?
- A new pattern! How do I proceed?