

## DOWNLOAD

When buying an online cut, please make sure to click on the correct paper format for your printer before you put the cut into the shopping cart. Our patterns are available as standard in DIN A4 and US letter format - larger patterns are also available in DIN A0 format.

## PRINTING THE CUT

Open the PDF file using Adobe Reader. If you do not have this program, you can download and install it [here](#) free of charge. Page 1 contains a control square. First print only this page with the setting "actual size" or "100%". Then check whether the indicated dimensions have been printed correctly. Afterwards print all further pages.



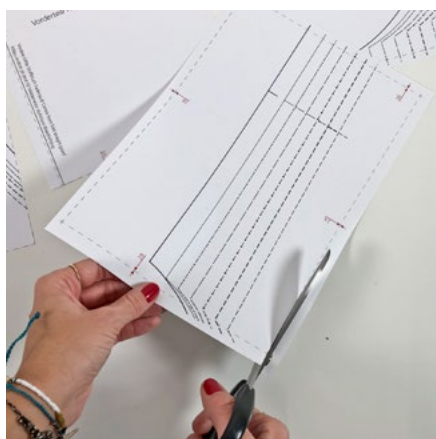
## STICKING THE PAGES TOGETHER

Sticking the pages together is very easy, because the cuts are always structured in the same way. Place all sides systematically next to each other.

In the columns (from top to bottom), the sides A, or B, C, etc. are placed one below the other.

In the rows (from left to right) the pages 1, 2, 3, etc. are next to each other.

Before sticking the pages together, all right-side edges and bottom edges are cut off along the straight dotted line.



made to create **BERNINA**



Then first stick the individual rows together. Identical fitting marks meet exactly. If there is no red arrow with a number at one edge of the page, this means that there is no further page following along this edge.

Then the rows are stuck underneath each other. Again, pay attention to the numbering with the arrows at the edges. All pages with the letter A are underneath each other, all with B etc.

### AND THEN?

Select your size according to the measurement table printed on the cut. You will find tips on the correct choice of size, measurements, and possible cut adjustments under the links below. Afterwards the cut can be cut out.

Have fun with sewing!

**By the way:** All our cuts and measurements are without seam allowance, unless otherwise indicated!

### PLEASE READ HERE ALSO

- How do I take the measurements correctly?
- How do I adjust a cut?